

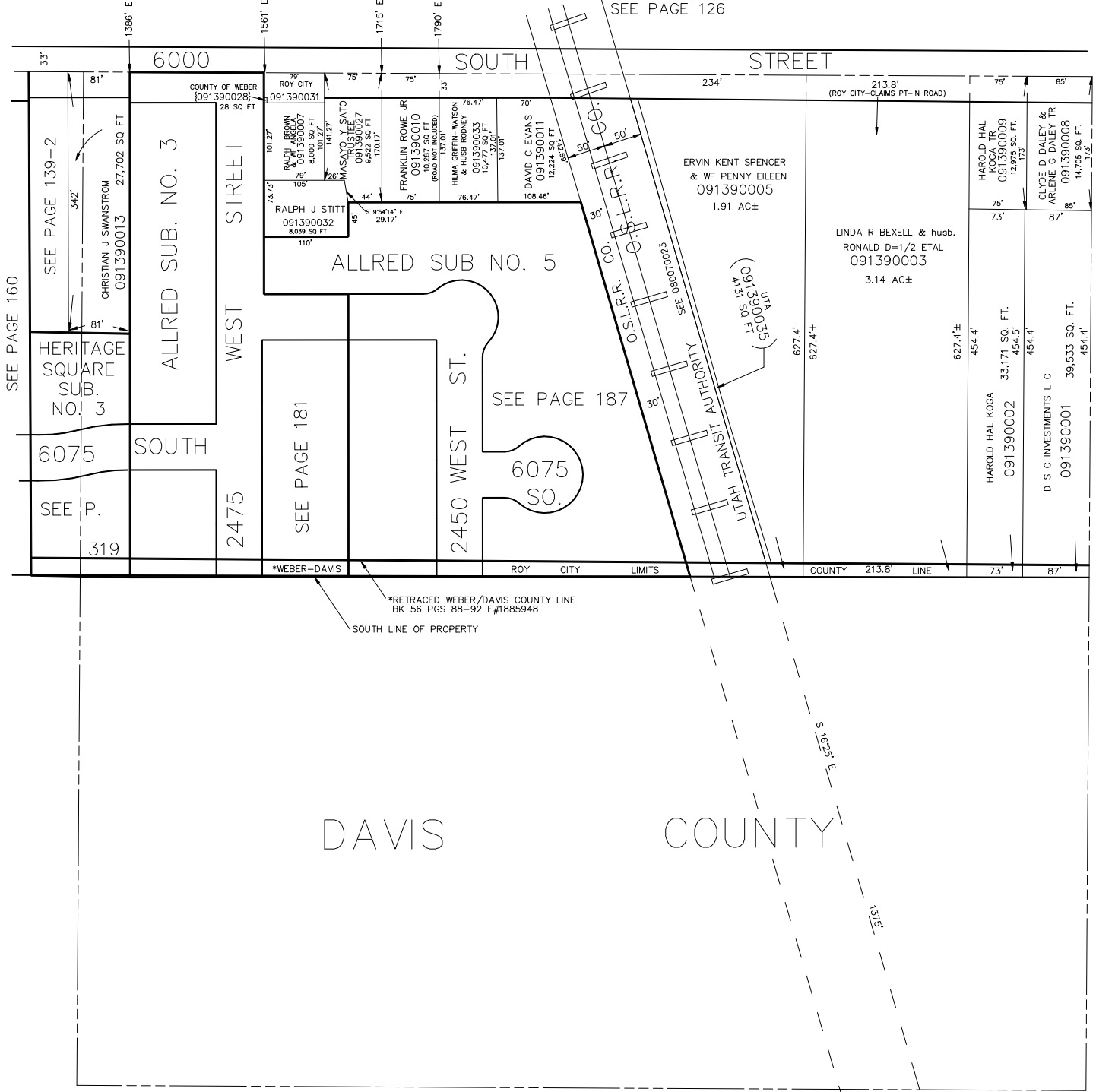
N.E. 1/4 OF THE S.W. 1/4
SECTION 23, T.5N., R.2W., S.L.B. & M.

IN ROY CITY

SCALE 1" = 100'

TAXING UNIT: 41

SEE PAGE 126



SEE PAGE 160

SEE PAGE 139-2
CHRISTIAN J SWANSTROM
091390013
27,702 SQ. FT.

HERITAGE SQUARE
SUB.
NO. 3

6075
SEE P.
319

ALLRED SUB. NO. 3

2475
SOUTH

SEE PAGE 181

2450 WEST ST.

SEE PAGE 187

6075 SO.

*WEBER-DAVIS

ROY CITY LIMITS

COUNTY 213.8' LINE

73' 87'

*RETRACED WEBER/DAVIS COUNTY LINE
BK 56 PGS 88-92 E#1885948

SOUTH LINE OF PROPERTY

DAVIS

COUNTY

ERVIN KENT SPENCER
& WF PENNY EILEEN
091390005
1.91 AC±

LINDA R BEXELL & husb.
RONALD D=1/2 ETAL
091390003
3.14 AC±

HAROLD HAL
KOGA TR
091390009
12,875 SQ. FT.

627.4'±
454.4'

HAROLD HAL KOGA
091390002
33,171 SQ. FT.
454.5'

CLYDE D DALEY &
ARLENE G DALEY TR
091390008
14,705 SQ. FT.

627.4'±
454.4'

D S C INVESTMENTS L C
091390001
39,533 SQ. FT.
454.4'

SEE PAGE 129